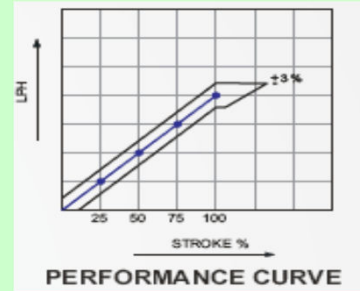
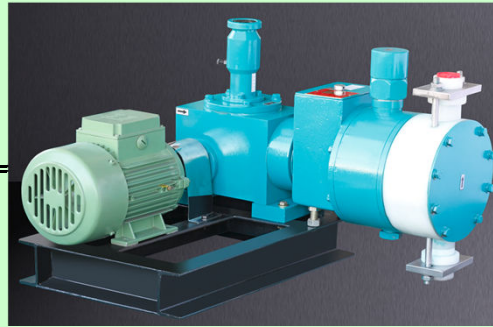


HD MP-20 S2



SELECTION CHART

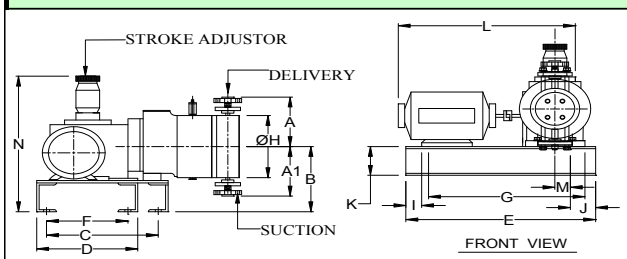
PUMP SPEED - 100 SPM (NOMINAL) GEAR RATIO 15:1 MOTOR 1440 RPM			MODEL	PLUNGER Dia mm	Max. Pr. Kg/cm ²	PUMP SPEED - 200 SPM (NOMINAL) GEAR RATIO 8:1 MOTOR 1440 RPM		
Cap. LPH	Suc. Del. mmNB/BSP	Motor k.w				Cap. LPH	Suc. Del. NB/BSP	Motor k.w
87	15	0.75	HD MP 20 S2	32	38	174	15	0.75
110	15			36	30	220	15	
136	15			40	25	271	25	
164	25			44	20	328	25	
195	25			48	17	391	25	
212	25			50	15	424	25	
247	25			54	13	495	25	
266	25			56	11	532	25	
326	25			62	10	652	40	
358	25			66	9	739	40	
381	25			68	8	784	40	

MOC CHART

Sr.No.	Description	MOC	Sr.No.	Description	MOC
1	Plunger	EN 8	4	NRV Sealing Ring	PTFE
2	Liquid Head	SS304, SS316, alloy20,P.P.,PVC,PTFE	5	NRV Balls	SS, PTFE, Glass, Ceramic
3	Non Return	SS304, SS316, alloy20,P.P.,PVC,PTFE			

FEATURES

- Multiple head pumps with common drive for mixing two or more liquid in a desired ratio. The ratio can be easily reset.
- The design & Performance of MM Series Pumps conforms to API675.



DIMENSIONS IN MM

A	A1	B	C	D	E	F
190	190	210	460	260	420	220
G	H	I	J	L	M	N
320	Ø200	55	50	480	30	450

WEIGHT (App) : 90 KG.

PACKING SIZE : 24 x 22 x 17 Inches

